



uniview tec
850 Freeport Parkway Suit 100
Coppell, TX 75019
888-288-7644
tech@unviewsales.com

How to Setup the Long Range PoE Capability of the uniview tec Camera

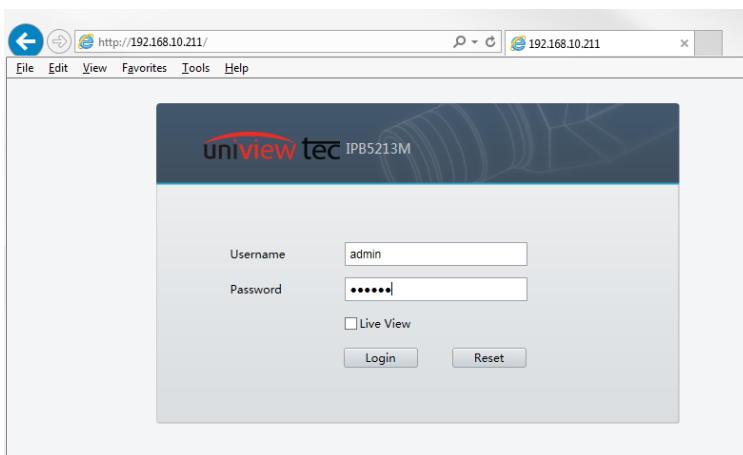
The following steps will guide you in setting up the Long Range PoE Capability of the uniview tec camera. This can extend cable lengths up to 820ft (250M) depending on the camera model. Please note that to take advantage of Long Range PoE capability the camera will need to be connected to either a uniview tec NVR or uniview tec Switch that supports Long Range PoE.

Camera Setup

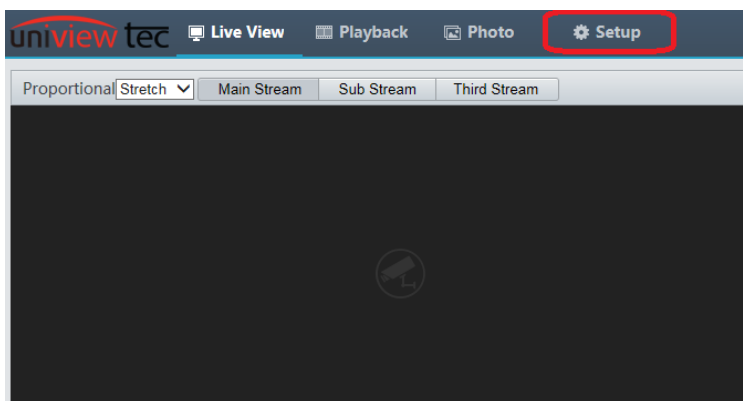
First, login to the setup of the IP camera.

This can be accomplished by browsing into the IP address of the camera.

At the login screen enter the User/Password of the camera. The default credentials are admin / 123456

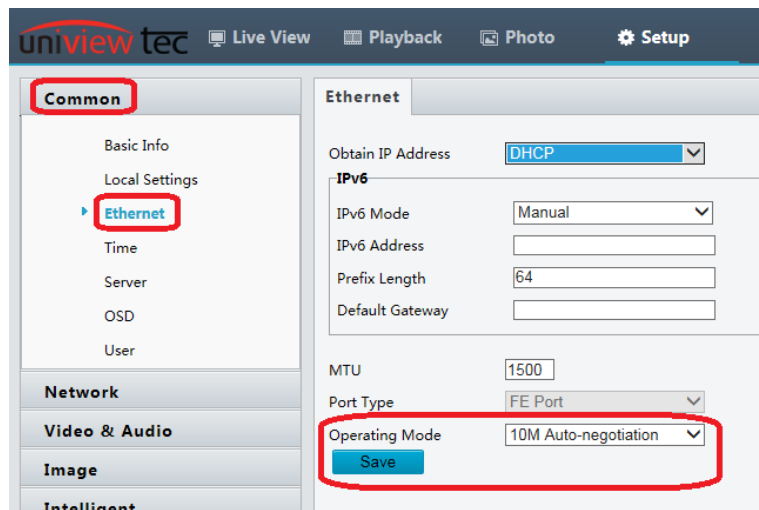


When the Live View screen comes up click on Setup.



Once in the Setup menu click on Ethernet under Common. You will then want to change the operating mode to 10M Auto-negotiation.

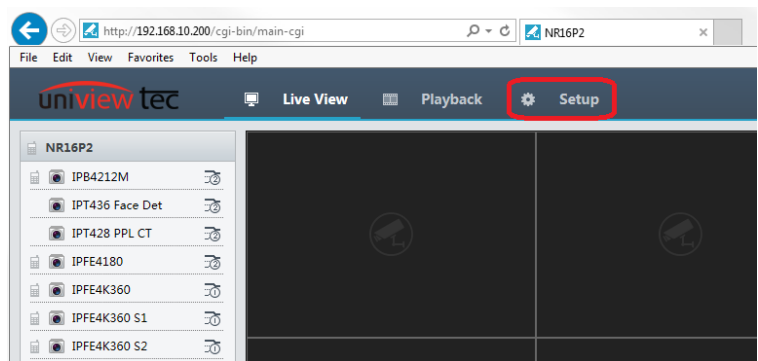
This change can also be accomplished by connecting the camera to the uniview tec Test Monitors ([4KTESTMON](#)).



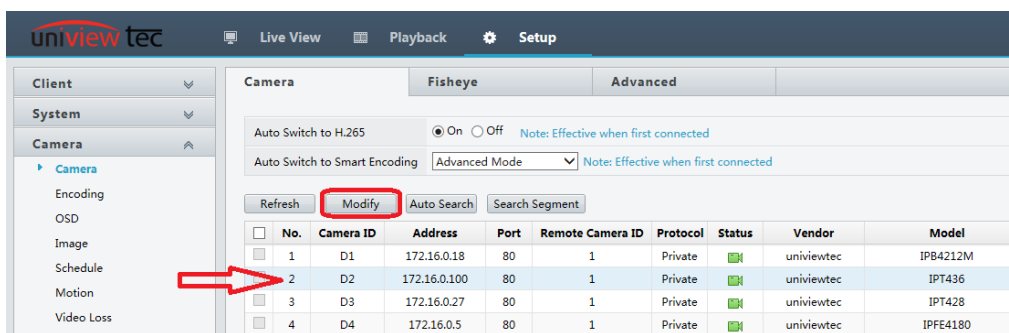
NVR Connection Setup

If you are connecting the camera to one of the PoE ports on the NVR you will need to enable Extended Transmission in the NVR. To do this you will need to log into the menu of the NVR by browsing to the local IP address of the NVR and logging in with the credentials for the NVR.

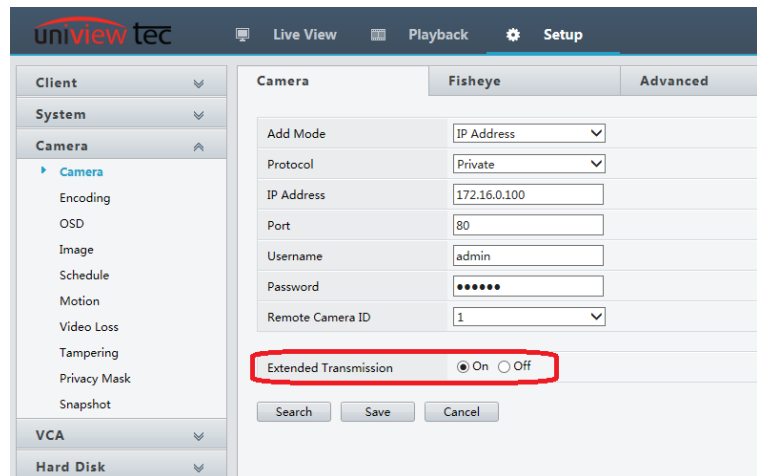
Once on the Live View screen click on Setup.



After accessing the menu go to Cameras. On the camera page select the channel where the camera is connected and then click on Modify.



After entering into Modify enable Extended Transmission.



Network Switch

If the camera is connected to one of the uniview tec switches you will need to turn on the Extended Transmission switch on the front of the unit.

Front panel



Extend switching guide

You can toggle switch to decide whether to use Extend or not (Note: After toggling the switch, you need to reboot the device to enable or disable this function):

ON: Extend mode is enabled. All downlink ports are separated, and the network transmission distance is extended to 250 meters.

OFF: Extend mode is disabled (switch to standard switching mode). All ports can communicate with each other.