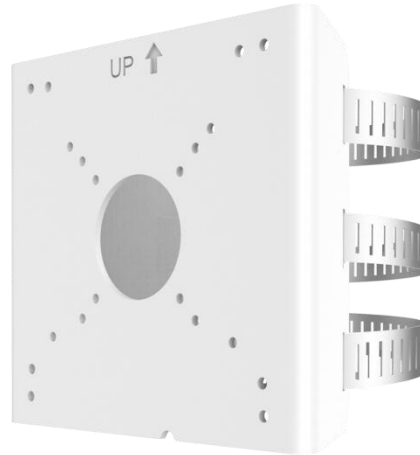


# POLE MOUNT



## TR-UP06-C-IN

Specification	Description
Application	Outdoor Pole or rail installation of bullet camera; 2.6" ~ 5" diameter poles
Dimensions (L×W×H)	127 x 136 x 62.5mm (5 x 5.35 x 2.46")
Weight	0.34kg (0.75lb)
Material	Aluminum Alloy

### Dimensions

