

VIDEO IMAGE FLICKER, PULSING or STROBING

In North America, electrical power systems operate at a frequency of 60Hz. As a result many lighting systems also fluctuate or pulse at the same rate. In some cases with indoor scenes, if the camera is not set at the same frequency to synchronize with the lighting there can be distortions in the image. This could be seen as pulsing, strobing or horizontal dark bands flickering across a video image. To accommodate for these lighting conditions the following changes sometimes need to be made. This tech note will cover making these changes from the Setup of the NVR.

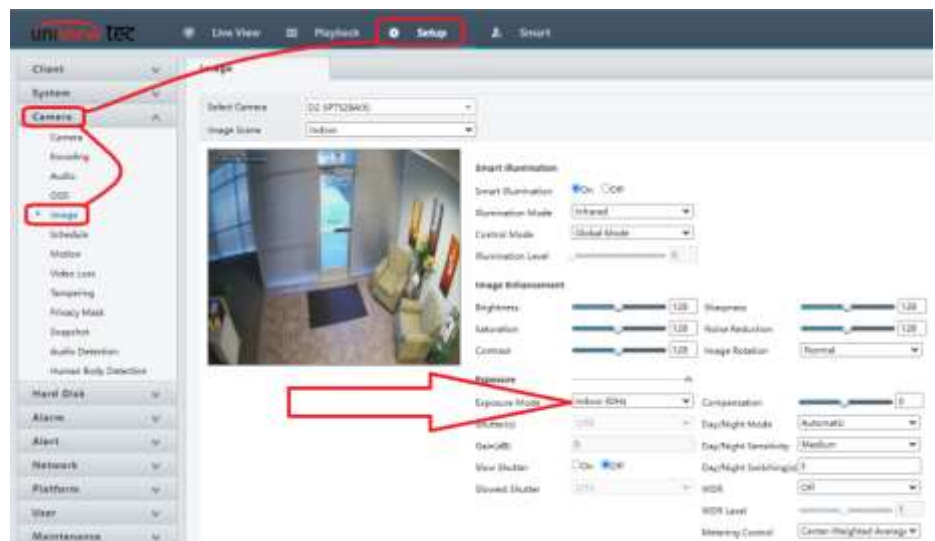
Change Exposure Mode

In the NVR Setup go to Image under Camera.

Look for Exposure.

Ensure that Exposure Mode is set to Indoor 60Hz.

Settings are immediately applied.



If this does not correct the issue move on to the next settings change.

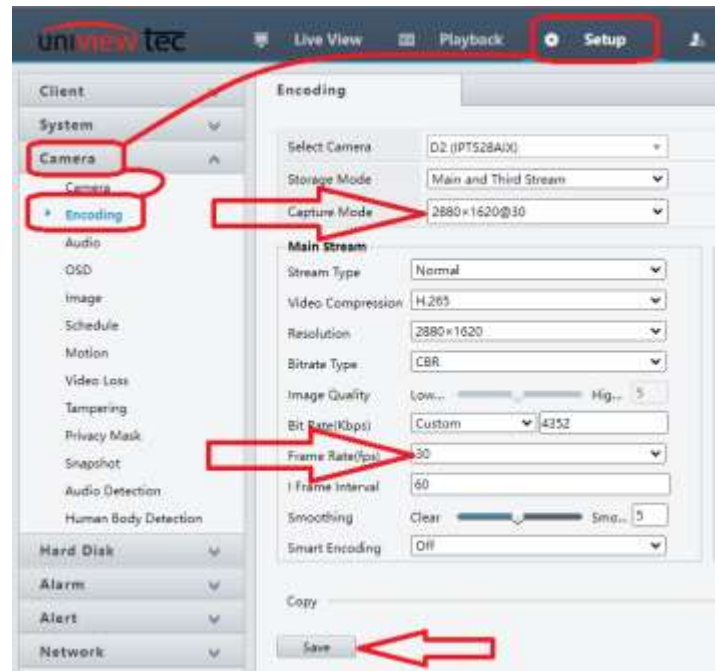
Adjust Frame Rate

In NVR Setup go to Encoding under Camera.

Change the Capture Mode to a resolution that includes @30.

Next change the Frame Rate to 30.

Click on Save



If this does not correct the issue move on to the next settings change.

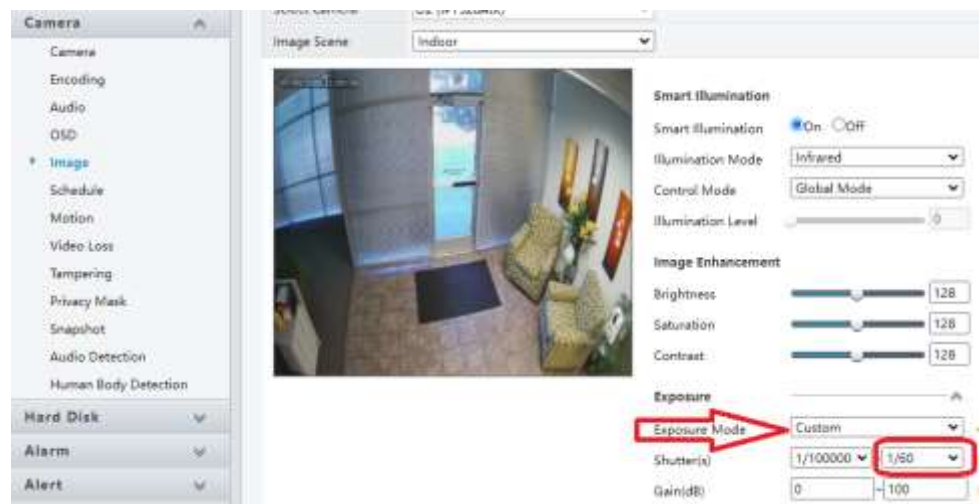
Adjust Exposure

Go back to Exposure in Image.

Change Exposure Mode to Custom.

Next change the upper Shutter speed to 1/60 (2 times the Frame Rate)

Settings are immediately applied.



If this does not correct the issue please contact our support group for additional troubleshooting and support.