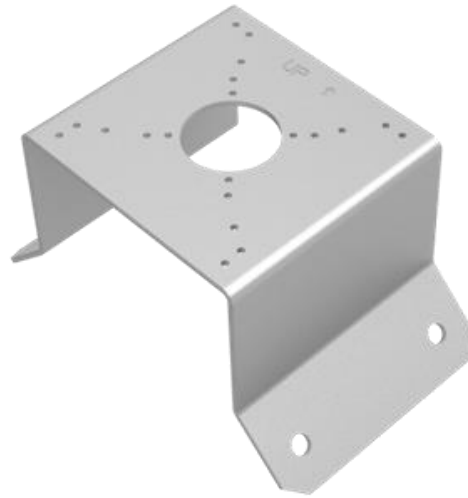


BULLET & VANDAL DOME CORNER MOUNT



TR-UC08-C

Specification	Description
Application	Corner installation of bullet and vandal dome cameras
Dimensions (LxWxH)	137 x 127 x116mm (5.4 x 5.x 4.6")
Weight	0.42kg (0.93lb)
Material	Aluminum Alloy

Dimensions

