



uniview tec  
850 Freeport Parkway Suite 100  
Coppell, TX 75019  
888-288-7644  
[tech@unviewsales.com](mailto:tech@unviewsales.com)

## GUARD STATION CUSTOM VIEWS

Guard Station is a powerful highly configurable remote viewing software. As such, multiple custom live video displays can be configured for showing cameras in different formats and layouts.

Note - Prior to following this setup, please ensure all desired cameras have already been added to Guard Station.

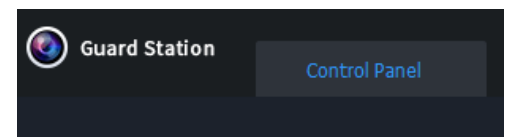
Open Guard Station and log in.



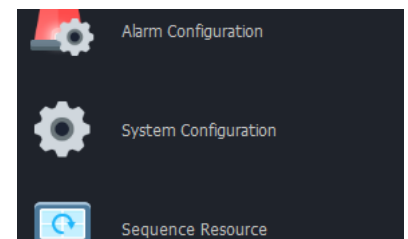
### SOFTWARE SETUP

For best viewing it is recommended that GPU mode is enabled, as this will impact the number of cameras that can be viewed simultaneously.

Click on the Control Panel tab.



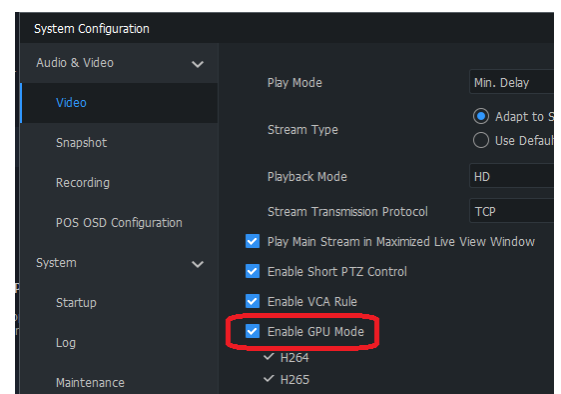
On the right side locate and click on System Configuration.



Click Enable GPU and select Apply.

If GPU mode cannot be enabled refer to the Guard Station computer system requirements on the specification sheet found using the link below.

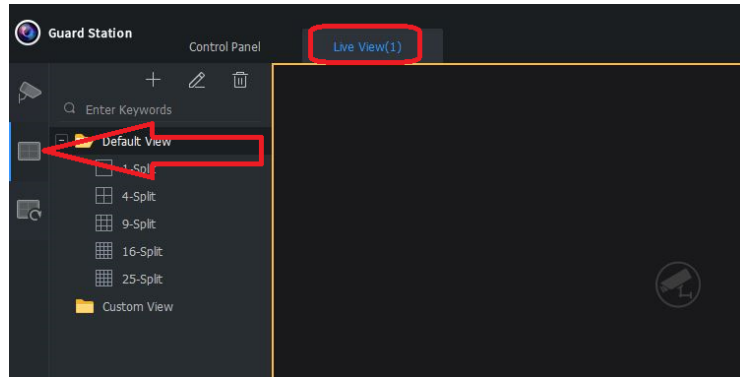
[www.univiewtechnology.com/support-center/client-software-vm](http://www.univiewtechnology.com/support-center/client-software-vm)



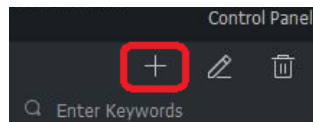
## LAYOUT SETUP

Click on the Live View tab.

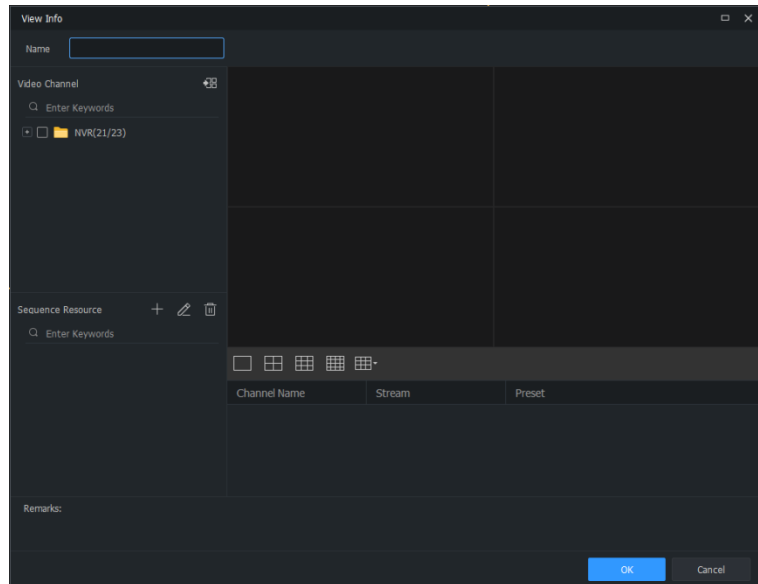
On the left side look for the view icon and click on it.



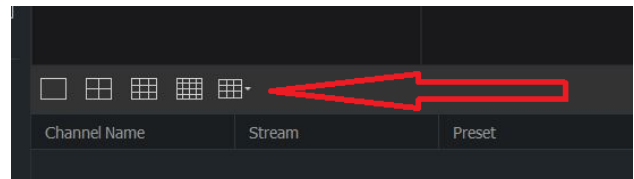
Next click on the plus icon.




The custom View setup screen will open.

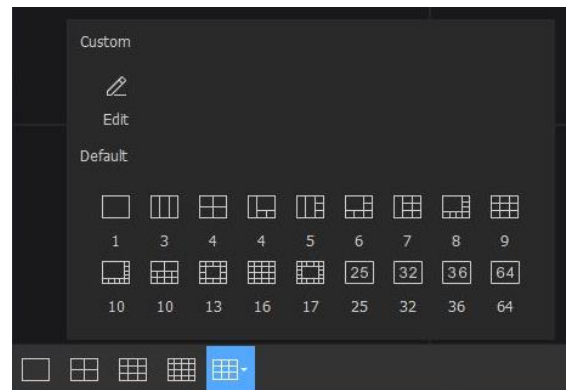



Click on the desired layout.



If you click on the last icon  you will see more preconfigured layouts.

If one of these layouts will work for your needs select it and move on to adding cameras.

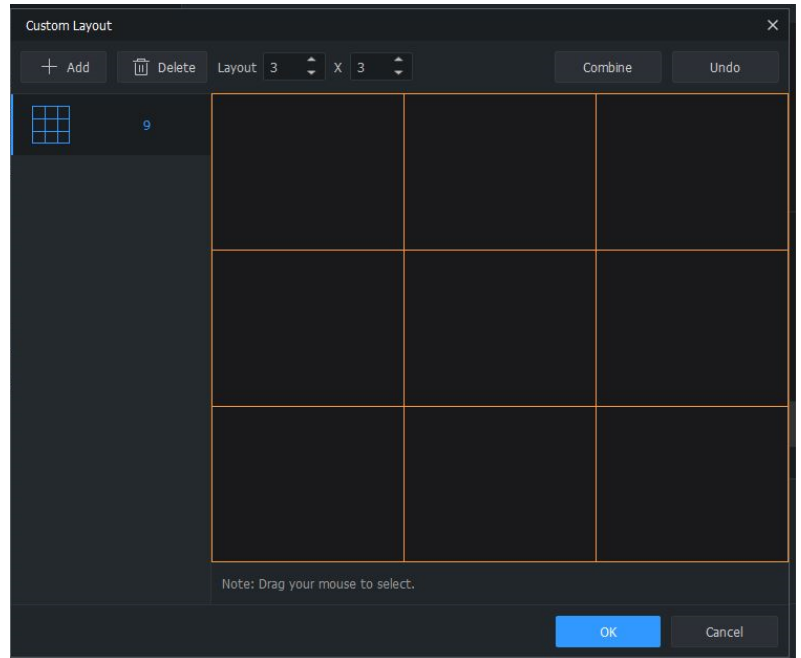


If none of these layouts are desired click on edit  to custom create one.

The Custom Layout screen will open.

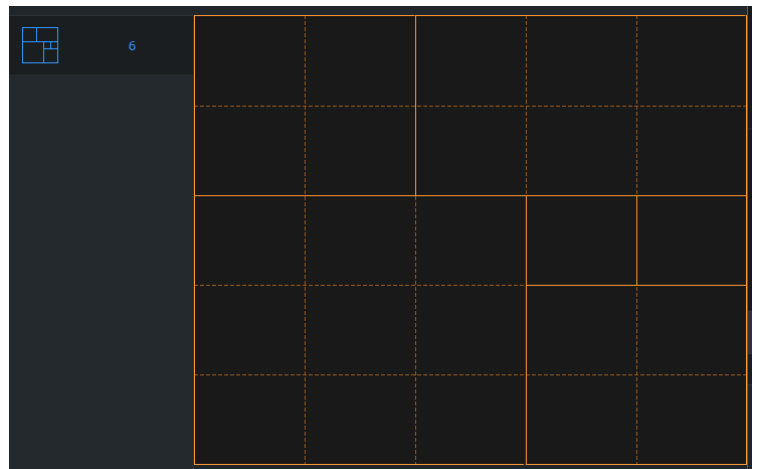
Click on Add.

Select the desired grid by picking the number of cameras by the number of cameras in Layout.

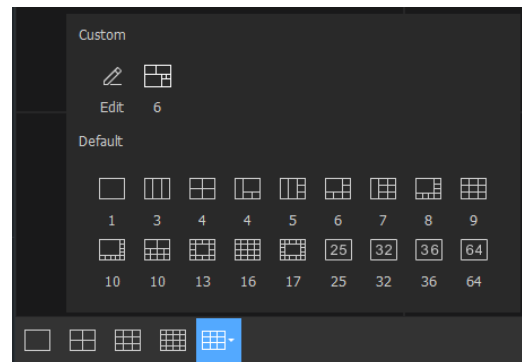


Blocks can be combined by clicking in the center of one block and dragging across others to select them and make a larger block.

Once done click on OK at the bottom of the screen.



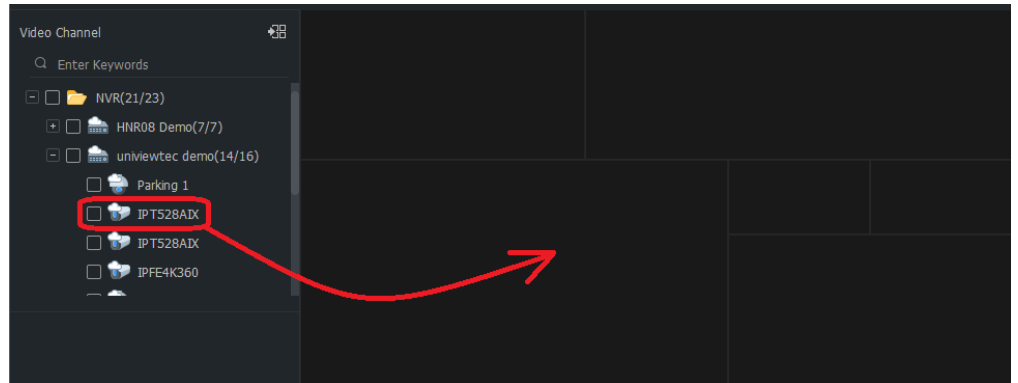
To then select the created custom layout click on the more layout icon and you will see it beside the edit icon.



## ADDING CAMERAS

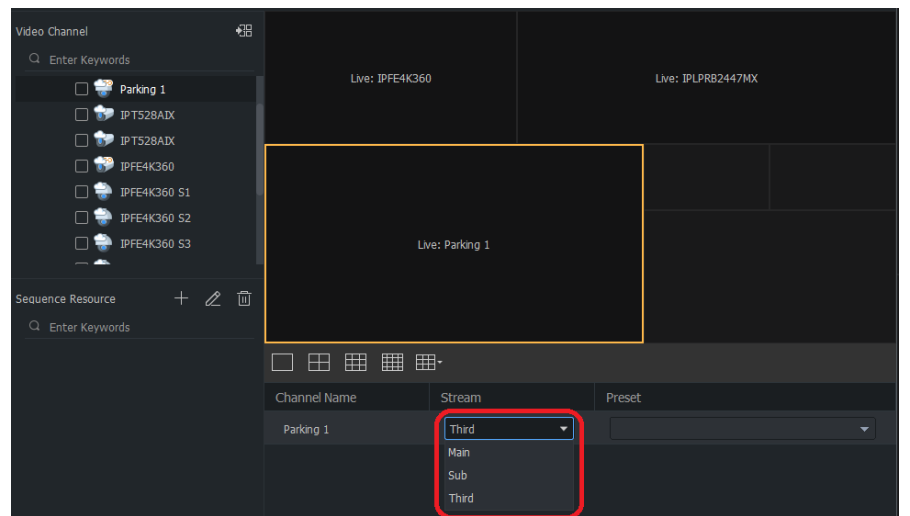
Locate the camera under Video Channel. Select it and then drag it into the desired window.

To assist in locating a desired camera you can enter its name in the Enter Keywords field.

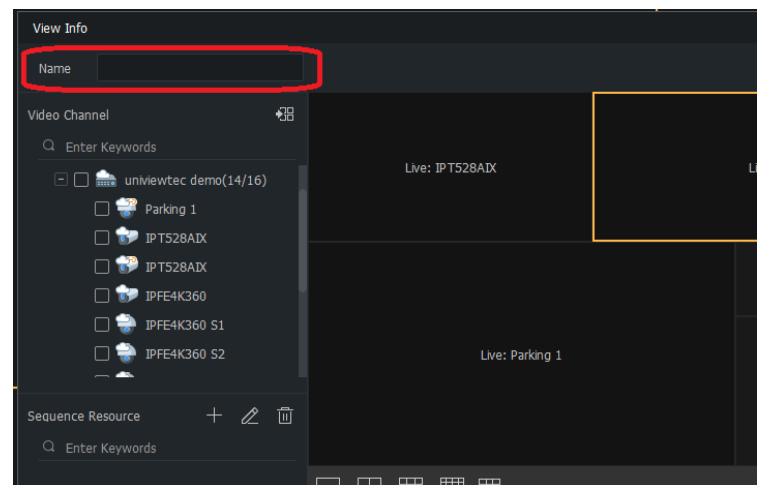


As you add cameras you can select which camera video stream will be accessed and displayed.

Note – Each cameras stream has different resolutions, bitrates and frame rates. These settings can be changed in the camera setup. The stream selected will affect the total number of cameras which can be viewed simultaneously.

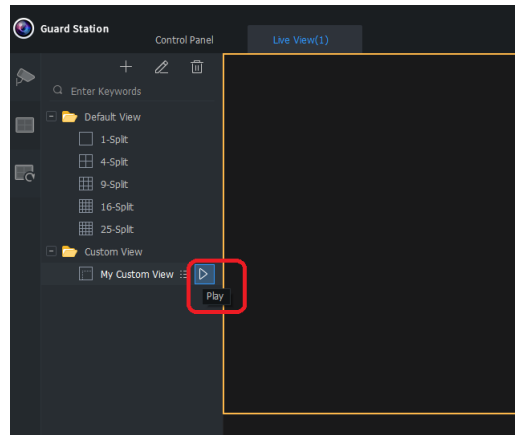


After completing the addition of all desired cameras, name the custom view and click on OK at the bottom of the screen.

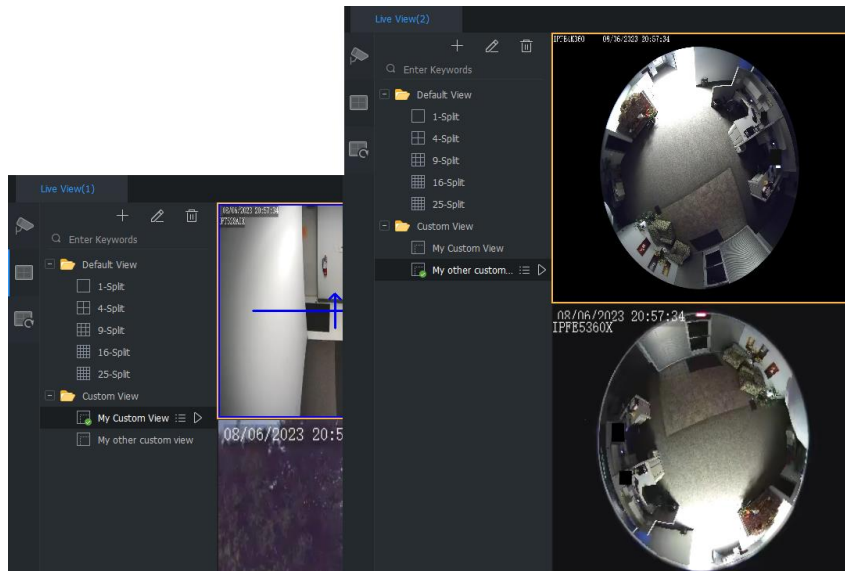


Once back on the Live View screen, to display the custom view click on the play icon beside the custom view name you just created.

If you find that you need to make changes any of the custom setup selections can be edited or deleted.



In addition, multiple custom views can be created and displayed across multiple Live View screens.

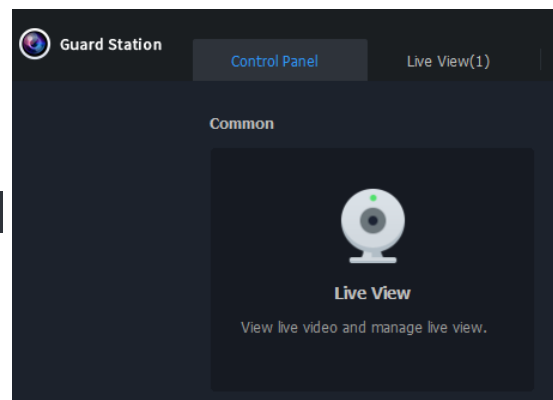


To open multiple Live View tabs go to Control Panel and click on Live View.

Up to 4 Live View tabs can be open at a time.



If the computer running the Guard Station has multiple monitors, Live View tabs can be displayed on these screens by clicking on the tab and dragging it to that screen.



For the display capabilities of Guard Station software refer to the Guard Station Specification Sheet found on our website. <https://www.univiewtechnology.com/support-center/client-software-vms>